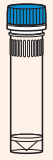




Kit Contents



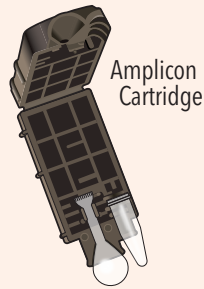
Lysis Tube



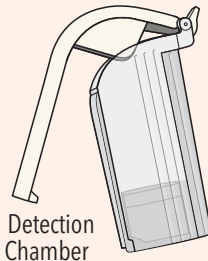
Dilution Tube



Reaction Tubes

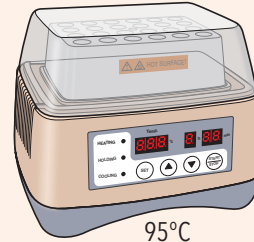


Amplicon Cartridge

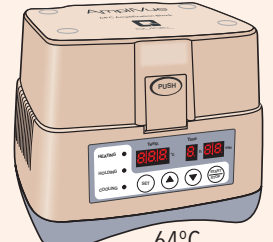


Detection Chamber

Equipment



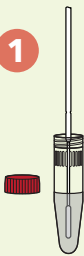
95°C Lysis Block



64°C Amplification Block with heated lid

Assay Procedure – Heat Lysis

1



Insert swab into Lysis Tube and swirl for 10 seconds.

2



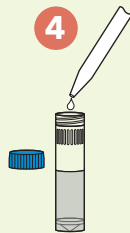
Heat for 10 minutes at 95°C.

3



VORTEX 5 seconds

4



Add 50 µL to Dilution Tube.

5



VORTEX 5 seconds

Amplification

1



Transfer 50 µL to Reaction Tube.

2



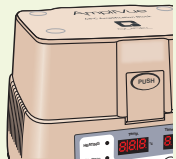
Rehydrate by pipetting up and down at least five times.

3



Close lid tightly and proceed to next step.

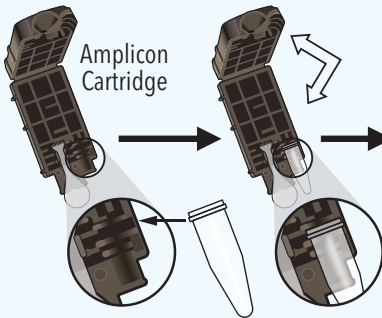
4



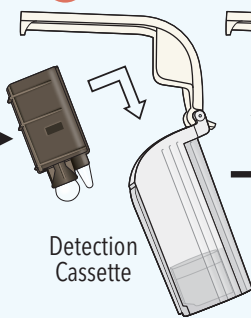
Heat for 35 minutes at 64°C.

Detection

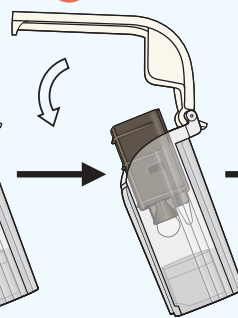
1



2

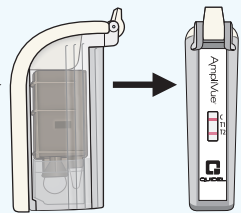


4

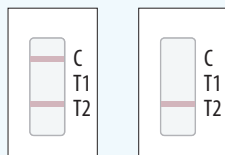


5

Read after 10 minutes



Interpretation of Results



Positive for GAS



Negative for GAS

Invalid



Unresolved: failure due to inhibitory specimen, or reagent failure, or device failure. Repeat test per Package Insert.