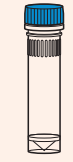




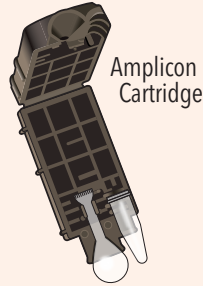
### Kit Contents



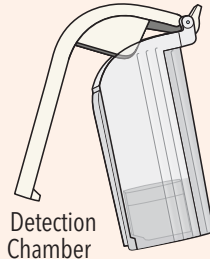
Dilution Tubes



Reaction Tubes

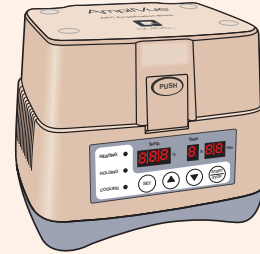


Amplicon Cartridge



Detection Chamber

### Equipment



64°C Amplification Block with heated lid

### Assay Procedure - Lysis

1



Lesion swab in transport media (VTM).

2



VORTEX

3



Add 20 µL to Dilution Tube.

4



VORTEX

### Amplification

1



Transfer 50 µL to Reaction Tube.

2



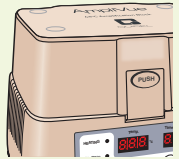
Rehydrate by pipetting up and down three to five times.

3



Close lid tightly and proceed to next step.

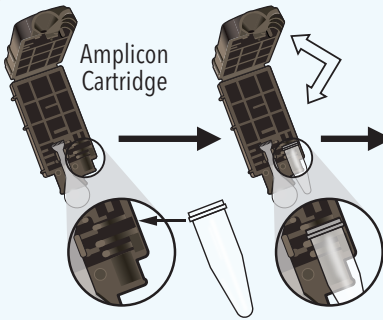
4



Heat for 45 minutes at 64°C.

### Detection

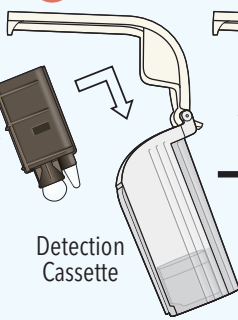
1



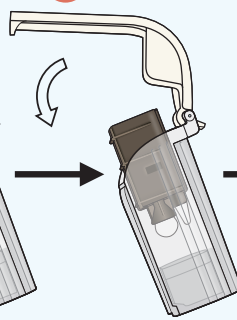
2



3

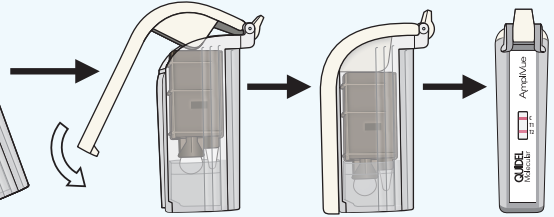


4



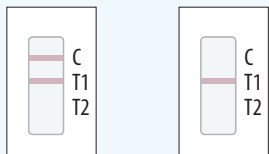
5

Read after 15 minutes



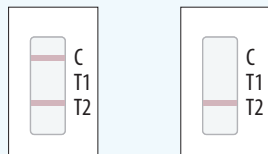
### Interpretation of Results

HSV-1



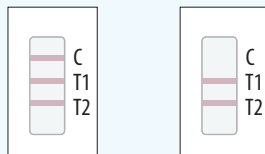
HSV-1 DNA detected.

HSV-2



HSV-2 DNA detected.

HSV-1 and HSV-2



HSV-1 and HSV-2 DNA detected.

Unresolved



Unresolved: failure due to inhibitory specimen, or reagent failure, or device failure. Repeat test with original lesion Swab specimen.